



**Barefoot Retreats  
Burnham Market  
International  
Horse Trials**

**Event Protocols  
16<sup>th</sup> – 18<sup>th</sup> April 2021**



**BAREFOOT  
RETREATS**



**If you or any member of your family have come into contact or have had any Covid-19 symptoms in the last 14 days, it is paramount that you do NOT attend the event**

## Owners & Riders

The resumption of British Eventing Affiliated events will run with the following restrictions and guidelines until further notice.

In an effort to mitigate the risk of transmission and further spread of Covid-19, the following policy will be implemented by Musketeer Event Management for the Enhanced Competition Safety during the Covid-19 pandemic and must be adhered to when attending the Burnham Market International Horse Trials (16th - 18th April 2021). The policy had been developed in conjunction with British Eventing, the events CMO and Health and Safety steward, and is based on the currently accepted best practices by the World Health Organization (WHO) and US Center for Disease Control (CDC).

This plan will be kept current and relevant and will be updated to reflect current Government guidance. The Event Policy will not replace the applicable guidance and policies from domestic government and health authorities. It supplements their recommendations with important sport and event specific considerations

**ANY PERSON FEELING UNWELL WITH SYMPTOMS OF COVID-19 – HIGH TEMPERATURE, FEVER, AND A PERSISTENT COUGH OR LOSS OF TASTE OR SMELL PLEASE DO NOT ATTEND THE EVENT.**



## 2021 - Key Principles

- ✓ All persons on any Event site must adhere to HMG guidance and advice on Social Distancing Measures (<https://www.gov.uk/coronavirus>) (<https://www.gov.scot/coronavirus-covid-19>) and any direct guidance for sport resumption
- ✓ Rule of 6 – This will be the overriding principle for all outdoor social contact. All persons on venue are to comply with the rule of six (not two households, as this will be difficult to steward and police) and for groups to keep a 2m Social Distance.
- ✓ All Officials and Volunteer are to be kept to a minimum throughout the Event. Details of who is on venue will be recorded for Test & Trace requirements.
- ✓ All Personnel on site without an official role or under competitor protocols will be considered part of the public attendance.
- ✓ Public Attendance– A cap (which will remain under review) of 500 people will be in place. All public attendees need to purchase tickets in advance and will be required to use the NHS app to register on venue or complete details to comply with Test and Trace requirements. Events to provide a C19 Compliance Steward for every 200 public attendees.
- ✓ NHS QR Code will be used on site.
- ✓ The event will be run in accordance with the FEI Return to Play Policy as well as BE C19 Sport Protocols.



## PRE-EVENT

Please make sure that all pre-event information has been read and all instructions followed.



There is a limited number of people to be allowed on site. MEM must have the detail of all persons on the event site for the purpose of Track & Trace Everyone MUST complete a health check available at [www.musketeer.com](http://www.musketeer.com)



All Scoring will be published electronically on [www.eventingscores.co.uk](http://www.eventingscores.co.uk)



All competitor information will available online via the website.



EVERYONE coming onto site MUST follow event directional signage, there are to be no exceptions as all car registrations are logged for the purpose of Track & Trace.



# PRE-EVENT 2021 – Covid-19 Sport Protocols



Athletes are asked to try and keep support crew to a minimum;  
1 x Rider plus  
2 x Support (This will allow trainers to be on venue – No direct coaching in warm up areas)  
All owners registered for the competing horse can attend.



Dressage Tests will be available by completing the dressage Request form at; [www.musketeer.co.uk/event-selection/](http://www.musketeer.co.uk/event-selection/)  
Cross Country Course maps will be available online at [www.crosscountryapp.com](http://www.crosscountryapp.com)



No Rider substitutions. Substitutions must use the same times as the original horse. All requests need to be via email or text prior and during event and on Event.



There will be no formal prize giving for the national classes and ALL prize money forms can be downloaded from [www.musketeer.co.uk](http://www.musketeer.co.uk) - All forms must be submitted within 3 weeks of the last day of competition



NUMBERS - Riders must use the numbers provided through Eventing Scores with the correct branding - NO OTHER NUMBER BIBS will be permitted . Failure to do so can result in sanctions as per the new British Eventing rule designed to preserve the commensal value to sponsors which you will all appreciate is very important.



# ARRIVALS

Entering the event site **MUST** be done via the one-way system and must register at the drive through check in located at the entrance to the site here a member of the OC will direct you to you designated car park.

There will be cameras at the entrance and exit gates filming all vehicles entering and exiting the site for the purpose of Track and Trace (all footage will be destroyed withing 14 days of the final day of competition)

## **RIDERS**

- ✓ Please make sure you have your competition numbers ready on arrival at the check in centre you will then be directed to either the over night lorry park or the day lorry park

## **Owners**

- ✓ Owners – there no limit on owners! If you are registered owner of a competing horse you will gain access to the site using you BE QR code if you are not a BE member, please email [info@musketeer.co.uk](mailto:info@musketeer.co.uk)



# KEY EVENT INFO



All persons on site must adhere to the social distancing protocols and keep a minimum distance of 2m from people outside their bubble. If for whatever reason the 2m social distancing guideline has to be broken a Cover, mask, or shield should be worn this rule excludes an Athlete sitting on a horse.

No on-site Event Office - An Information Point for competitors will be located at the main event hub.



Hand Sanitisation stations will be located around site, specifically in high contact areas for example stables compound, show jumping warm up and in the toilet areas. **PLEASE USE THEM**

Refreshment and trade stands will be present on venue employing strict SD measures.



All toilets will be thoroughly cleaned overnight. Hand washing or sanitiser will be available both outside the units, as well as inside the cubicles.

For those staying on site unfortunately due to covid we are now not able to provide showers - these are national restrictions which have been implemented for all campsites.



NO score boards - Results will be available at;

<https://www.eventingscores.co.uk/>

**Musketeer Event Management**



# ATHLETES

- ✓ An Information point for competitors will be located at the main arena for on event queries.
  - ✓ Lorry Parking please observe the stewards on arrival. NO Cars will be allowed in the Horse Box Park. Lorries will be parked a minimum 3m apart.
  - ✓ All persons on venue are to comply with the rule of six and for groups to keep a 2m Social Distance.
  - ✓ Please bring your mask with you for when as it is advised that you wear it when it is difficult to social distance.
  - ✓ Competitors are encouraged to use facilities in their own lorries where possible (there are NO showers onsite)
- ✓ All scoring issues are to be resolved remotely. All official protests are managed in the Show Office as per the BE and FEI rules details of who and how to contact the correct official can be found on the notice board at the stable managers. All queries and objections will need to be communicated to officials before the competition has concluded whilst volunteers and judges are still on venue or at the latest by 20:30 hrs. on the day of competition relating to the score.





# Field of Play Protocols

## Stable Compound

In order to minimise numbers in the stables only the following accredited personal will be allowed into the stables compound;

- Staff
  - Riders
  - 1 groom per horse
  - Officials
- ✓ MASKS MUST BE WORN AT ALL TIMES IN THE STABLES COMPOUND
  - ✓ NO Stable equipment to be shared between competitors
  - ✓ Anyone touching any communal points i.e. Taps must thoroughly sanitise their hand before doing so.

## Dressage Phase

- ✓ Permitted officials OC, FEI officials and designated volunteers.
- ✓ Groom/connection to be kept to a minimum and to maintain social distancing at all times
- ✓ Minimise numbers. Access to warm up to be stewarded

## Show Jumping Phase

- ✓ Permitted officials OC, FEI officials and designated volunteers.
- ✓ 1 x groom/connection to raise practice fences
- ✓ Please use hand sanitiser before and after handling warm up fences.
- ✓ No spectating from within warm up arena

## Cross Country Phase

- ✓ Permitted officials OC, FEI officials and designated volunteers.
- ✓ No Trainers or coaches in the warm-up areas
- ✓ Social distancing to be maintained at all times



## OWNERS

**If you or any member of your family have come into contact or have had any Covid-19 symptoms in the last 14 days, it is paramount that you do NOT attend the event**

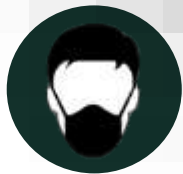
- ✓ Owners – there no limit on owners! If you are registered owner of a competing horse you will gain access to the site using you BE QR code if you are not a BE member please email [info@musketeer.co.uk](mailto:info@musketeer.co.uk)
- ✓ NO parking in the lorry park
- ✓ To minimise people onsite, we ask that you watch your own horse compete and leave site in sensible time.
- ✓ All persons on venue are to comply with the rule of six and for groups to keep a 2m Social Distance.
- ✓ Please bring your mask with you for when as it is advised that you wear it when it is difficult to social distance.
- ✓ If you require a pass or any further information, please email [info@musketeer.co.uk](mailto:info@musketeer.co.uk)



KEY EVENT INFO;



Please make sure you follow instructions and keep to your allocated times



Riders and Support please bring your own PPE – Mask, gloves for use in situations where Social Distancing is not possible and compulsory in the stables area.

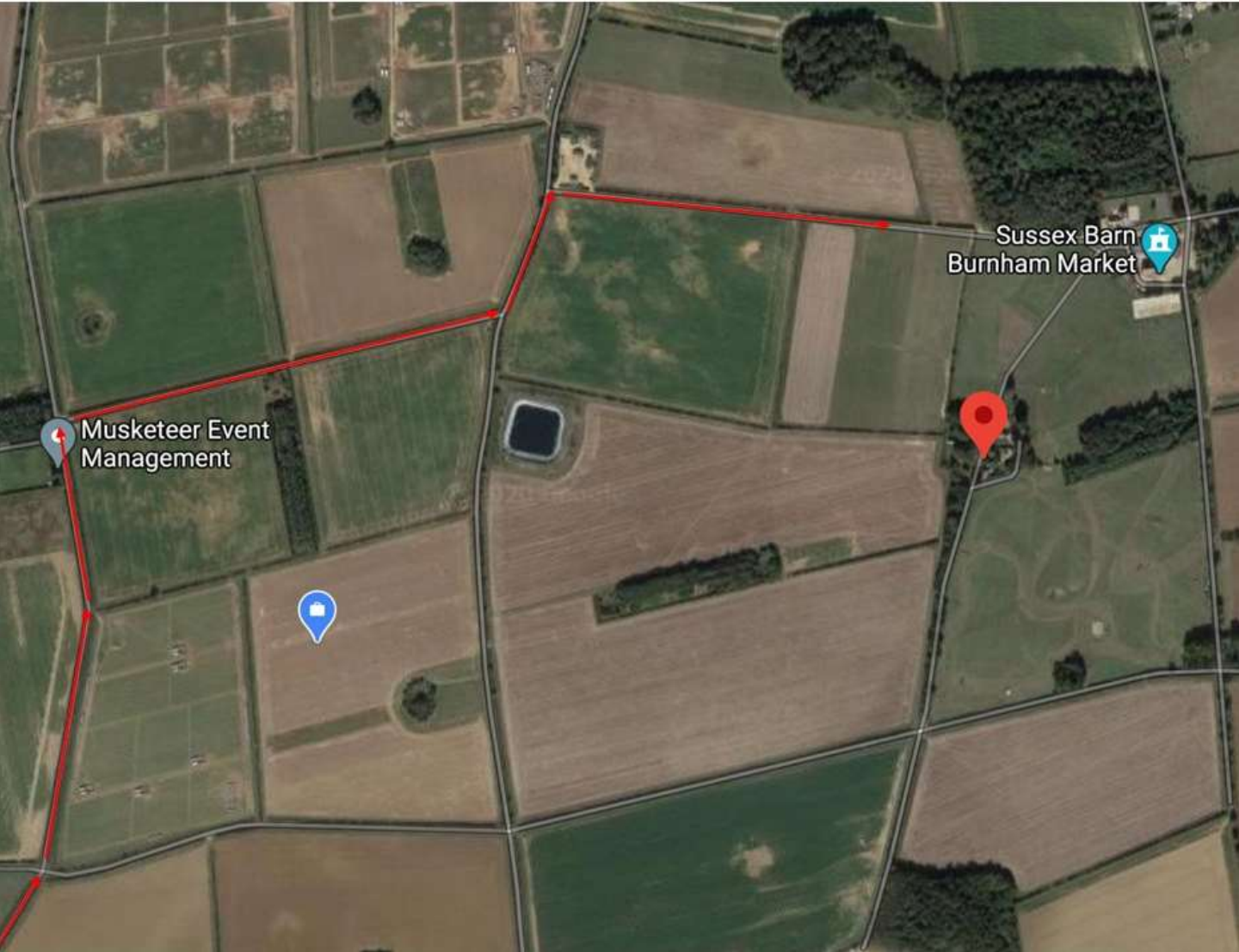
DO NOT borrow or lend equipment or clothing.



MAINTAIN SOCIAL DISTANCING at all times DO NOT socialise on site until Government restrictions are lifted.

Dogs are welcome but strictly on leads at all times.





## MAP

Sussex Farm, Burnham Market, Norfolk, United Kingdom,  
PE31 8JY

Grid reference TF800420

## Directions

Burnham Market is 20 miles northeast of King's Lynn and 10 miles northwest of Fakenham. Sussex Farm is 1.75 miles west of Burnham Market. Horseboxes must not approach through Burnham Market. There will be AA signs from Fakenham and King's Lynn. All traffic must approach the event via Docking.

## Access, Egress & parking

Traffic Management meets all vehicles at **Point A** – only accredited vehicles to be given access to venue – these to be identified in windscreen of vehicles.

Vehicles which do not display a pass and with occupants who outline genuine reason to enter, maybe permitted to enter the venue, if not they will be directed to exit route

**Lorries** – will drive directly into venue – will be identified by a rider number in the windscreen. *Parking - 10m Space between Lorries if tying up on both Sides, 5m Space between Lorries if tying up on one side, 3m Space between Lorries if not tying up outside. Car park 1 (CP1)*

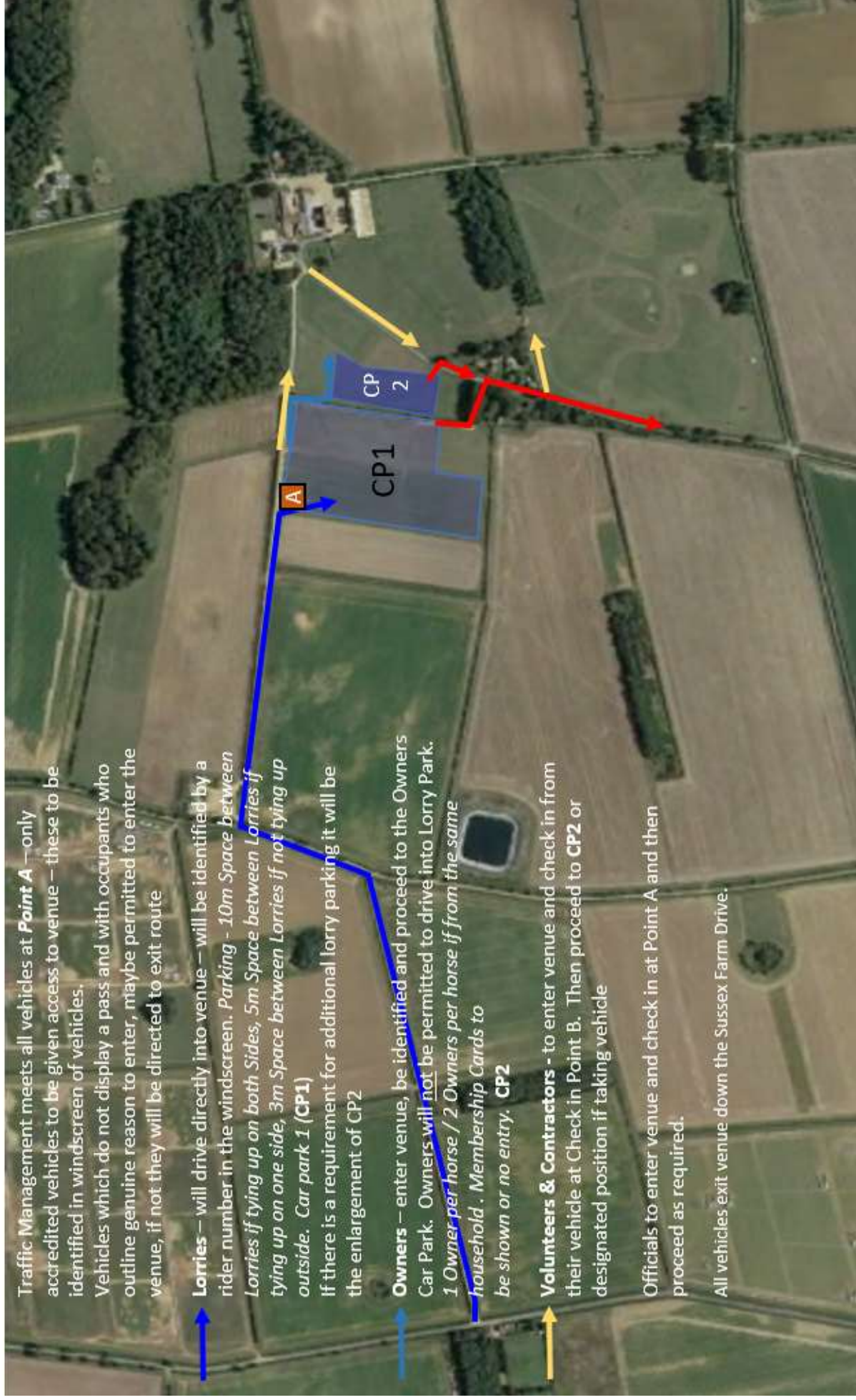
if there is a requirement for additional lorry parking it will be the enlargement of CP2

**Owners** – enter venue, be identified and proceed to the Owners Car Park. Owners will not be permitted to drive into Lorry Park. *1 Owner per horse / 2 Owners per horse if from the same household . Membership Cards to be shown or no entry. CP2*

**Volunteers & Contractors** - to enter venue and check in from their vehicle at Check in Point B. Then proceed to CP2 or designated position if taking vehicle

Officials to enter venue and check in at Point A and then proceed as required.

All vehicles exit venue down the Sussex Farm Drive.





# THANK YOU

Thank you so much for entering to compete at Burnham Market International Horse Trials and we are delighted to be getting the sport up and running again. In these strange times more than ever before our sport will be in the spotlight especially these first few events. We ask for your help in make this a success.

Even though many parts of the day will feel normal and it could be all to easy to slip back into old routines and greeting friends and colleges who we might not have seen for quite a while! Please help us by setting the right example and sticking to the protocols put in place for everyone's safety.

We also ask that any posts or comments on Social Media platforms are appropriate and reflect the extensive protocols that are in pace to keep all our competitors and volunteers safe.

**Thank you again and good luck  
Alec and the team at Musketeer**